

# KRYSTALVISION<sup>TM</sup>

KRYSTALVISION IMAGE SYSTEMS PVT. LTD.



## Advanced X-RAY SYSTEMS for Homeland Security



**Corporate office & Factory Address:**  
Krystalvision Image Systems Pvt. Ltd.  
Shri Sant Dnyaneshwar Industrial Estate, Plot No. 58 & 59/2  
D-II Block MIDC Chinchwad, Pune-411019  
Tel No. +91 20 46703475, +91 7028052228,  
Email ID: sales@krystalvision.co.in, svd@krystalvision.co.in  
Website: www.krystalvision.co.in or www.xrayscanner.in

# Krystalvision



## Advanced X-Ray Systems for Homeland Security

### About Krystalvision

Krystalvision Image Systems Pvt. Ltd. was formed to provide innovative and high quality products to the growing security scanning market. The company focuses on requirements of government and private sector clients to equip them with modern and technically superior products at reasonable cost. The objective of the company is to design, manufacture, supply and service security products and solutions. Krystalvision is constantly working to improve and simplify x-ray technology and is a trusted security partner to well-known companies.

### Krystalvision Provides five product lines:

- 01** 5 Series - Parcel & Small X-Ray Baggage Scanners  
KV5030TT, KV5030 & KV5532
- 02** 6 Series - Hand & Cabin X-Ray baggage scanners  
KV6040SV, KV6040 3D, KV6040DV, KV6550, KV6550 3D & KV6550 DV
- 03** Series 7 and 10- Luggage & Cargo X-Ray baggage scanners  
KV7560, KV7560 DV, KV10080, KV100100 & KV100100DV
- 04** MobileVS Series - Vehicle Mounted X-Ray Inspection Systems  
KV6040VS, KV6550VS, KV7560VS & KV100100VS
- 05** RTVS Series - Real Time Viewing Systems  
KVPS

## Quality You can Trust

You can rely on Krystalvision to consistently meet all specifications of product quality. Our attention to quality is the foundation of our success – and is the reason some of the largest customers rely on us to provide best detection capabilities.

We put products through rigorous quality testing in pre-production stages to qualify the performance and reliability. Moreover, each individual system undergoes various quality, stress and final inspection tests before delivery to our customers. Our products comply with international quality standards and have been tested and certified as such by 3<sup>rd</sup> parties such as NABL labs and government agencies.

### Product related Services

- Product training for operation & maintenance
- After sales services
- Spare parts support
- Safety audits

## Rental Support

Krystalvision Image Systems Pvt. Ltd., provides rent/hire options to customers for immediate security coverage. Krystalvision has years of experience setting up X-Ray machine on rentals for a wide variety of events ranging from stadiums, hotels, special events to corporate meetings.

## USP

- Superior product quality and reliability
- Cost effective product and service
- Quick and effective customer support
- Made in India - Indigenous development

## Certificates



# Krystalvision 5 Series

## Parcel & Small X-Ray Baggage Scanners

### Summary

Krystalvision offers 5 Series - x-ray baggage scanners that are designed for scanning small objects like mail, parcel and small baggage. Series 5 x ray scanners are compact, portable and can be wheeled for rapid relocation making it the ideal system for hotels, shopping malls, convention centers and event based security environments or where space is at a premium.

Krystalvision 5 Series scanners utilize dual energy detectors, optimized x ray generator and advanced proprietary image processing algorithms to provide the user with best-in-class high resolution image quality and excellent threat detection capability. Customization is possible to suit to your specific requirements.

### Key Features

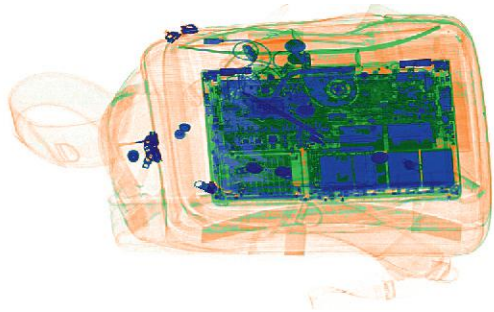
- High reliability and availability
- Advanced high resolution imaging
- Best-in-class threat detection capabilities
- Easy to operate ergonomic user interface
- Integrated self-diagnostic reporting capability
- Meets all Government safety regulations
- Lower total cost of ownership (TCO)
- Excellent pre & post sales support



## TECHNICAL SPECIFICATIONS

### PHYSICAL SPECIFICATIONS

Model No.	KV5030TT	KV5030	KV5532
Tunnel Opening in MM	500 (W) x 300 (H)	500 (W) x 300 (H)	550 (W) x 320 (H)
Overall Dimensions in MM	1270 (L) x 735 (W) x 940 (H) Approx.	1380 (L) x 740 (W) x 1190 (H) Approx.	1380 (L) x 800 (W) x 1210 (H) Approx.
Conveyor Load Capacity	100 kg evenly distributed	100 kg evenly distributed	160 kg evenly distributed
Conveyor/Belt Speed	0.18-0.3 m/s Bidirectional	0.18-0.3 m/s Bidirectional	0.18-0.3 m/s Bidirectional
Conveyor Height	320 mm Approx.	750 mm Approx.	750 mm Approx.



**Advanced Material Discrimination**



**Automatic Detection & Alerts**

## GENERAL SPECIFICATIONS

Steel Penetration	12 mm to 37 mm
Wire Resolution	42 SWG Typical, 40 SWG Guaranteed
Power Requirements	230VAC:160-280 VAC, 50Hz, 6 Amp
Display / Resolution/ Sensitivity	22" or more High Resolution, Full HD LED Color Monitor, 1920 x 1280; 24 bit/pixel color and 24 Visible Levels, 65535 Gray Levels
Anode Voltage / Beam Divergence	100-180 KVA / Upward or downward beam direction
Tube Current/ Cooling / Duty Cycle	0.1-1.2 mA / Sealed oil bath with forced air /100%
Storage /Operating Temperature / Humidity	-20°C to 70°C / 0°C to 50°C / Up to 95% non-condensing
Computer	Intel i5 processor on Windows OS.
Safety Certifications	AERB, ISO 9001:2015, ISO 14001, CE, IEC, Food & Film safety certified.

## IMAGE PROCESSING & ADDITIONAL SOFTWARE FEATURES

Machine diagnostics	Start-up and continuous self-diagnostics and alerts to user to indicate faults
Tagging / Zoom	Automatically tracks baggage count, date, time, operator ID / Variable zoom up to 64 X, Sniper zoom, 9 quadrant zoom
Material discrimination	3 & 6 color imaging, greyscale imaging, pseudo color imaging, organic & inorganic imaging
Image storage/ Image recall & archive	Store up to 200,000 images / All previous images recall possible
Additional features	4 secure levels of access, programmable keys, high/low penetration, variable edge enhancement, variable brightness and contrast, inverse or negative color imaging, HiSpot/super enhancement, one key shut down, network ready, threat detection alerts, TIP (Threat Image Projection).

## OPTIONAL FEATURES & ACCESSORIES

- Dual monitor: One color and one black & white monitor
- Network Supervisory Workstation (NWS), Suspect Search Station (SSS)
- Combined Test Piece (CTP), in & out camera, Dust proof cover, Control desk
- UPS, Stabilizer, printer and I/O roller tables

# Krystalvision 6 Series

## Hand & Cabin X-Ray Baggage Scanners

### Summary

Krystalvision offers 6 Series - x-ray baggage scanners that are designed for scanning cabin baggage and medium size baggage. 6 Series x ray scanners are most popular due to their small footprint, ability to blend into building entrance environment and scan large volumes efficiently. These are commonly installed in government buildings, corporate offices, transportation infrastructure etc.

Krystalvision 6 Series scanners utilize dual energy detectors, optimized x ray generator and advanced proprietary image processing algorithms to provide the user with best-in-class high resolution image quality and excellent threat detection capability. Customization is possible to suit to your specific requirements.

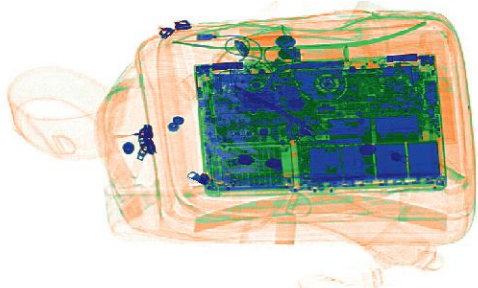
### Key Features

- High reliability and availability
- Advanced high resolution imaging
- Best-in-class threat detection capabilities
- Dual View and Virtual 3D models available
- Integrated Self-diagnostic reporting capability
- Meets all Government safety regulations
- Lower total cost of ownership (TCO)
- Excellent pre & post sales support
- Low bed model available



## TECHNICAL SPECIFICATIONS

PHYSICAL SPECIFICATIONS						
Model No.	KV6040 SV	KV6040 3D	KV6040 DV	KV6550	KV6550 3D	KV6550 DV
Tunnel Opening in MM	600(W) x 400(H)	600(W) x 400(H)	600(W) x 400(H)	650(W) x 500(H)	650(W) x 500(H)	650(W) x 500(H)
Overall Dimensions in MM	2020 (L) x 900 (W) x 1230 (H) Approx.	2020 (L) x 900 (W) x 1230 (H) Approx.	2020 (L) x 1200 (W) x 1330 (H) Approx.	2020 (L) x 950 (W) x 1330 (H) Approx.	2020 (L) x 950 (W) x 1330 (H) mm(H) Approx.	2020 (L) x 1250 (W) x 1430 (H) Approx.
Conveyor Load Capacity	170 kg evenly distributed	170 kg evenly distributed	170 kg evenly distributed	170 kg evenly distributed	170 kg evenly distributed	170 kg evenly distributed
Conveyor/Belt Speed	0.18-0.3 m/s Bidirectional	0.18-0.3 m/s Bidirectional	0.18-0.3 m/s Bidirectional	0.18-0.3 m/s Bidirectional	0.18-0.3 m/s Bidirectional	0.18-0.3 m/s Bidirectional
Conveyor Height	750 mm Approx.	750 mm Approx.	750 mm Approx.	750 mm Approx.	750 mm Approx.	750 mm Approx.



**Advanced Material Discrimination**



**Automatic Detection & Alerts**

## GENERAL SPECIFICATIONS

Steel Penetration	Standard: 37 mm, Typical: 39 mm
Wire Resolution	42 SWG Typical, 40 SWG Guaranteed
Power Requirements	230VAC:160-280 VAC, 50Hz, 6 Amp
Display / Resolution/ Sensitivity	22" or more High Resolution, Full HD LED Color Monitor, 1920 x 1280; 24 bit/pixel color and 24 Visible Levels, 65535 Gray Levels
Anode Voltage / Beam Divergence	100-180 KVA / Upward or downward and from side for dual view
Tube Current/ Cooling / Duty Cycle	0.1-1.2 mA / Sealed oil bath with forced air /100%
Storage /Operating Temperature / Humidity	-20°C to 70°C / 0°C to 50°C / Up to 95% non-condensing
Computer	Intel i5 processor on Windows OS.
Safety Certifications	AERB, ISO 9001:2015, ISO 14001, CE, IEC, Food & Film safety certified.

## IMAGE PROCESSING & ADDITIONAL SOFTWARE FEATURES

Machine diagnostics	Start-up and continuous self-diagnostics and alerts to user to indicate faults
Tagging / Zoom	Automatically tracks baggage count, date, time, operator ID / Variable zoom up to 64 X, Sniper zoom, 9 quadrant zoom
Material discrimination	3 & 6 color imaging, greyscale imaging, pseudo color imaging, organic & inorganic imaging
Image storage/ Image recall & archive	Store up to 200,000 images / All previous images recall possible
Additional features	4 secure levels of access, programmable keys, high/low penetration, variable edge enhancement, variable brightness and contrast, inverse or negative color imaging, HiSpot/super enhancement, one key shut down, network ready, threat detection alerts, TIP (Threat Image Projection).

## OPTIONAL FEATURES & ACCESSORIES

- Dual monitor: One color and one black & white monitor
- Network Supervisory Workstation (NWS), Suspect Search Station (SSS)
- Combined Test Piece (CTP), in & out camera, Dust proof cover, Control desk
- UPS, Stabilizer, printer and I/O roller tables

# Krystalvision Series 7 & 10 Luggage & Cargo X-Ray Baggage Scanners

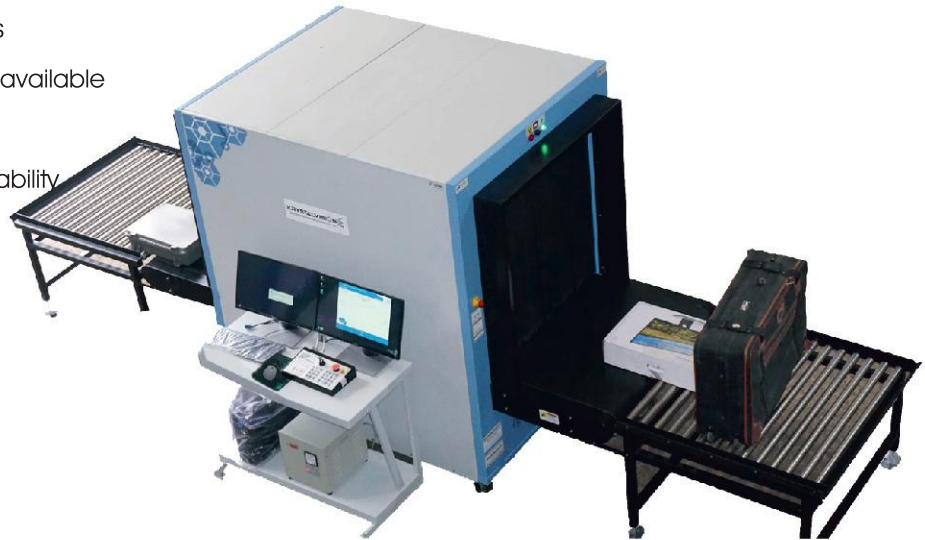
## Summary

Krystalvision offers 7 and 10 Series - x-ray baggage scanners that are designed for scanning large suitcases, checked in luggage, cargo and large size baggage. 7 and 10 Series x ray scanners are deployed for security screening of passengers in railway stations, metros, airports, sea ports. Low bed option is ideal for hotels, customs facilities, parcel services etc.

Krystalvision 7 and 10 Series scanners utilize dual energy detectors, optimized x ray generator and advanced proprietary image processing algorithms to provide the user with best-in-class high resolution image quality and excellent threat detection capability. Customization is possible to suit to your specific requirements.

## Key Features

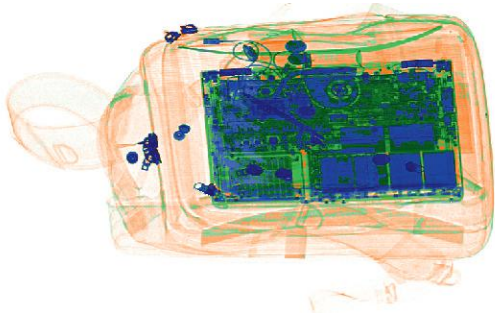
- High reliability and availability
- Advanced high resolution imaging
- Best-in-class threat detection capabilities
- Dual View option for improved detection available
- Low bed conveyor options available
- Integrated Self-diagnostic reporting capability
- Meets all Government safety regulations
- Lower total cost of ownership (TCO)
- Excellent pre & post sales support



## TECHNICAL SPECIFICATIONS

### PHYSICAL SPECIFICATIONS

Model No.	KV7560	KV7560 DV	KV10080	KV100100	KV100100 DV
Tunnel Opening in MM	750(W) x 600 (H)	750(W) x 600 (H)	1000(W) x 800 (H)	1000(W) x 1000 (H)	1000 (W) x 1000 (H)
Overall Dimensions in MM	2200 (L) x 1050 (W) x 1560 (H) Approx.	2200 (L) x 1350 (W) x 1660 (H) Approx.	2960 (L) x 1310 (W) x 1620 (H) Approx.	2960 (L) x 1310 (W) x 1820 (H) Approx.	2960 (L) x 1610 (W) x 1920 (H) Approx.
Conveyor Load Capacity	180 kg evenly distributed	180 kg evenly distributed	200 kg evenly distributed	200 kg evenly distributed	200 kg evenly distributed
Conveyor/Belt Speed	0.18-0.3 m/s Bidirectional	0.18-0.3 m/s Bidirectional	0.18-0.3 m/s Bidirectional	0.18-0.3 m/s Bidirectional	0.18-0.3 m/s Bidirectional
Conveyor Height (Low/hi bed)	Low bed- 320 mm / Hi-bed- 750 mm Approx.	Low bed- 320 mm / Hi-bed- 750 mm Approx.	Low bed- 320 mm / Hi-bed- 650 mm Approx.	Low bed- 320 mm / Hi-bed - 650 mm Approx.	Low bed- 320 mm / Hi-bed - 650 mm Approx.



**Advanced Material Discrimination**



**Automatic Detection & Alerts**

## GENERAL SPECIFICATIONS

Steel Penetration	26 mm to 35 mm
Wire Resolution	42 SWG Typical, 40 SWG Guaranteed
Power Requirements	230VAC:160-280 VAC, 50Hz, 6 Amp
Display / Resolution/ Sensitivity	22" or more High Resolution, Full HD LED Color Monitor, 1920 x 1280; 24 bit/pixel color and 24 Visible Levels, 65535 Gray Levels
Anode Voltage / Beam Divergence	100-180 KVA / Upward or downward and from side for dual view
Tube Current/ Cooling / Duty Cycle	0.1-1.2 mA / Sealed oil bath with forced air /100%
Storage /Operating Temperature / Humidity	-20°C to 70°C / 0°C to 50°C / Up to 95% non-condensing
Computer	Intel i5 processor on Windows OS.
Safety Certifications	AERB, ISO 9001:2015, ISO 14001, CE, IEC, Food & Film safety certified.

## IMAGE PROCESSING & ADDITIONAL SOFTWARE FEATURES

Machine diagnostics	Start-up and continuous self-diagnostics and alerts to user to indicate faults
Tagging / Zoom	Automatically tracks baggage count, date, time, operator ID / Variable zoom up to 64 X, Sniper zoom, 9 quadrant zoom
Material discrimination	3 & 6 color imaging, greyscale imaging, pseudo color imaging, organic & inorganic imaging
Image storage/ Image recall & archive	Store up to 200,000 images / All previous images recall possible
Additional features	4 secure levels of access, programmable keys, high/low penetration, variable edge enhancement, variable brightness and contrast, inverse or negative color imaging, HiSpot/super enhancement, one key shut down, network ready, threat detection alerts, TIP (Threat Image Projection).

## OPTIONAL FEATURES & ACCESSORIES

- Dual monitor: One color and one black & white monitor
- Network Supervisory Workstation (NWS), Suspect Search Station (SSS)
- Combined Test Piece (CTP), in & out camera, Dust proof cover, Control desk
- UPS, Stabilizer, printer and I/O roller tables

# Krystalvision MobileVS Series Vehicle Mounted X-Ray Inspection Systems

## Summary

Krystalvision MobileVS Series x ray machines are low bed Vehicle Mounted X ray Baggage Inspection Systems (XBIS) of different tunnel sizes. MobileVS Series has been developed to protect VIPs/event crowds at remote locations where permanent security infrastructure is not available. It can also be used in the commercial security market at locations such as concerts, sports arenas, convention centers, trade shows, and at other places where temporary checkpoints are needed. Built using a Tata vehicle, MobileVS Series x ray machines offer a compact and versatile platform for quick mobility, introducing an element of surprise for effective deterrence. MobileVS Series has advanced state of the art x ray system capable of scanning many items that are commonly brought including office bags, backpacks, bags, gift boxes, flower arrangements etc. Vehicles are equipped with CCTV system, intercom system, air conditioning system, power backup with UPS / Power generator.

MobileVS Series scanners utilize dual energy detectors, optimized x ray generator and advanced proprietary image processing algorithms to provide the user with best-in-class high resolution image quality and excellent threat detection capability. Customization is possible to suit to your specific requirements.

## Key Features

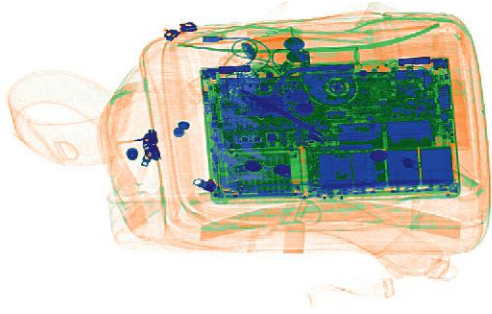
- High reliability and availability
- Advanced high resolution imaging
- Best-in-class threat detection capabilities
- Motorized & foldable entry & exit tables allows for easy handling
- CCTV Monitoring
- Integrated Self-diagnostic reporting capability
- Meets all Government safety regulations
- Lower total cost of ownership (TCO)
- Excellent pre & post sales support



## TECHNICAL SPECIFICATIONS

### PHYSICAL SPECIFICATIONS

Model No.	KV6040VS	KV6550VS	KV7560VS	KV100100VS
Tunnel Opening in MM	600 (W) x 400 (H)	650 (W) x 500 (H)	750 (W) x 600 (H)	1000 (W) x 1000 (H)
Overall Dimensions in MM	2020 (L) x 900 (W) x 1330 (H) Approx.	2020 (L) x 950 (W) x 1360 (H) Approx.	2020 (L) x 950 (W) x 1330 (H) Approx.	2020 (L) x 950 (W) x 1330 (H) Approx.
Conveyor Load	160 kg evenly	175 kg evenly	180 kg evenly	200 kg evenly
Capacity	distributed	distributed	distributed	distributed
Conveyor/Belt Speed	0.18-0.3 m/s	0.18-0.3 m/s	0.18-0.3 m/s	0.18-0.3 m/s
	Bidirectional	Bidirectional	Bidirectional	Bidirectional
Conveyor Height	450 mm Approx.	450 mm Approx.	450 mm Approx.	450 mm Approx.



**Advanced Material Discrimination**



**Automatic Detection & Alerts**

## GENERAL SPECIFICATIONS

Steel Penetration	26 mm to 35 mm
Wire Resolution	42 SWG Typical, 40 SWG Guaranteed
Power Requirements	230VAC:160-280 VAC, 50Hz, 6 Amp
Display / Resolution/ Sensitivity	22" or more High Resolution, Full HD LED Color Monitor, 1920 x 1280; 24 bit/pixel color and 24 Visible Levels, 65535 Gray Levels
Anode Voltage / Beam Divergence	100-180 KVA / Upward or downward
Tube Current/ Cooling / Duty Cycle	0.1-1.2 mA / Sealed oil bath with forced air /100%
Storage /Operating Temperature / Humidity	-20°C to 70°C / 0°C to 50°C / Up to 95% non-condensing
Computer	Intel i5 processor on Windows OS.
Safety Certifications	AERB, ISO 9001:2015, ISO 14001, CE, IEC, Food & Film safety certified.

## IMAGE PROCESSING & ADDITIONAL SOFTWARE FEATURES

Machine diagnostics	Start-up and continuous self-diagnostics and alerts to user to indicate faults
Tagging / Zoom	Automatically tracks baggage count, date, time, operator ID / Variable zoom up to 64 X, Sniper zoom, 9 quadrant zoom
Material discrimination	3 & 6 color imaging, greyscale imaging, pseudo color imaging, organic & inorganic imaging
Image storage/ Image recall & archive	Store up to 200,000 images / All previous images recall possible
Additional features	4 secure levels of access, programmable keys, high/low penetration, variable edge enhancement, variable brightness and contrast, inverse or negative color imaging, HiSpot/super enhancement, one key shut down, network ready, threat detection alerts, TIP (Threat Image Projection).

## OPTIONAL FEATURES & ACCESSORIES

- Dual monitor: One color and one black & white monitor
- Network Supervisory Workstation (NWS), Suspect Search Station (SSS)
- Combined Test Piece (CTP), in & out camera, Dust proof cover, Control desk
- UPS, Stabilizer, printer and I/O roller tables
- CCTV, awaning, Push to talk system, airconditioning, wheel jacks

# Krystalvision RTVS Series Real Time Viewing Systems

## Summary

Krystalvision offers RTVS Series portable x-ray inspection systems designed for suspicious baggage found on field and remote locations. The system consists of a laptop, x-ray source and image capturing panel. The system is designed keeping in mind the need of security personal on the field and offers outstanding x-ray image quality down to the smallest detail.

The Krystalvision RTVS Series portable x-ray inspection system is light weight, easily configurable for different environments and can be setup in minutes by one person. It comes with choice of x-ray sources and has both wired & wireless capabilities. This system is ruggedized to handle harsh conditions. It is ideal system for Explosive Ordinance Disposal (EOD) operations, bomb squads, special forces operations etc.



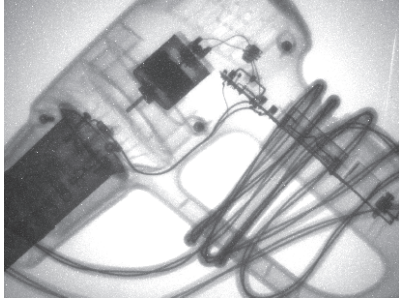
## Key Features

- Superior & efficient detection capabilities
- Setup in minutes by one person
- Wire & wireless operations
- Flat & camera based imaging screen
- Lower total cost of ownership
- Excellent pre & post sales support
- Real time image capture & analysis.

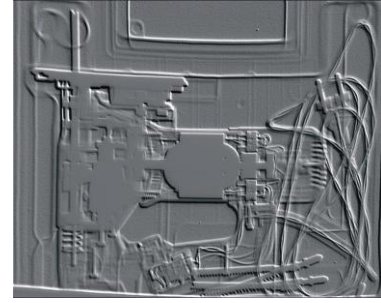
## TECHNICAL SPECIFICATIONS

### PHYSICAL SPECIFICATIONS

Model No.	KVPS
Imaging Screen	430 mm (W) x 330 mm (H) or more
Overall Dimensions	900 mm(L) x 700 mm(W) x 400 mm(H) Approx.
Weight	50 Kg Approx. including packing



**Realtime High Resolution Image**



**3D Emboss Image**

## GENERAL SPECIFICATIONS

Steel Penetration	14 to 24 mm
Wire Resolution	40 SWG
Power Requirements	160-240 VAC, 50Hz, 6 Amp
Video Display/ Resolution	15" high resolution laptop / 1920 x 1280; 24 bit/pixel color
X-ray Voltage/Tube current	120-270 KVA/0.7-1.2 mA
X-ray Type /Detector	Pulsed (0 to 99 pulses)/continuous / Flat array & camera based
Data transmission/time	Wired & wireless / Less than 5 Second
Storage /Operating Temperature/Humidity	-20°C to 70°C / 0°C to 50°C / Up to 95% non-condensing
Beam Divergence	Open
Computer	Intel i5 processor on Windows OS.
Safety Certifications	ISO 9001:2015, ISO 14001, CE, IEC,
Safety feature	Electrical safety features, software emergency stop, x-ray on indicating lamps, audio/visual alarm

## IMAGE PROCESSING & ADDITIONAL SOFTWARE FEATURES

Machine diagnostics	Start-up self-diagnostics and alerts to user to indicate faults
Tagging & marking/ Zoom	Automatically tracks date, time, mark area, annotate by text or shapes, image stitching & image summing / Upto 32 times
Material discrimination & Display Type	Black & white imaging, pseudo color, negative, sharpen, image cleaning, 3D emboss, edge detection, sharpening, brightness, gamma.
Image storage/ Image recall & archive	Store up to 200,000 images / All previous images recall possible

## OPTIONAL FEATURES & ACCESSORIES

- Carrying Bag, Tripod, ROV attachment, Printer, radiation meter, maintenance tools
- Extended power backup i.e. Extra battery for field operations

# Our Customers

## GOVERNMENT



## CORPORATE



## HOTELS & MALLS



# National & Global foot print



## Service Support Locations

East region: [east@krystalvision.co.in](mailto:east@krystalvision.co.in) - Kolkatta

West region:- [west@krystalvision.co.in](mailto:west@krystalvision.co.in) - Mumbai, Pune, Nagpur, Ahmedabad, Jamnagar

North Region:- [north@krystalvision.co.in](mailto:north@krystalvision.co.in) - Delhi, Lucknow, Jaipur

South Region:- [south@krystalvision.co.in](mailto:south@krystalvision.co.in) - Bangalore, Chennai



**Corporate office & Factory Address:**

Krystalvision Image Systems Pvt. Ltd.  
Shri Sant Dnyaneshwar Industrial Estate, Plot No. 58 & 59/2  
D-II Block MIDC Chinchwad, Pune-411019  
Tel No. +91 20 46703475, +91 7028052228,  
Email ID: sales@krystalvision.co.in, svd@krystalvision.co.in  
Website: www.krystalvision.co.in or www.xrayscanner.in